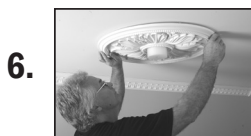
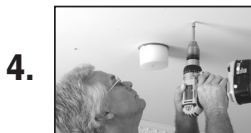
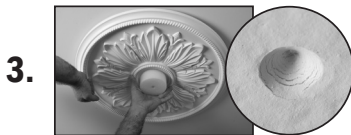


QUICK CLIPS™ MEDALLION INSTALLATION

Please Read And Follow All Installation Instructions Carefully



Recommended Tools:
Cordless drill with magnetic bit, tape measure and ladder.

General

- The Quick Clips™ Medallion Installation is a Focal Point® exclusive and is available with select Focal Point medallions.
- Focal Point medallions are factory primed. Use only quality latex or oil-based paints. Do not use lacquer paints. For a faster and easier project, paint or faux finish medallion prior to installation.
- Select styles and sizes are available in Focal Finish™, Focal Point's collection of faux finished medallions.

1. Remove the 4" foam center piece from the medallion packaging to use as a centering guide. Temporarily place the foam into the base of the junction box.
2. Insert the anchor locators into the keyholes on the backside of the medallion.
3. Position the medallion on the ceiling by aligning the center hole around the foam and gently tap around the outside to mark anchor locations. When positioning the anchor locators, try to avoid the studs.

Take the medallion down and remove the anchor locators from the back of the medallion. Three indicator marks will be visible after the medallion is taken down.

4. Screw each anchor into the ceiling at the marked locations.
5. Turn each screw into the anchor leaving 1/8" of the screw showing from the ceiling. If a stud is encountered, install the screw without the anchor. The edge of the marking device is 1/8" and can be used to measure the drive depth of the screws.
6. Position the medallion on the ceiling by aligning the keyholes on the back with each screw using the foam piece as a centering guide.
7. Once the three screws are aligned in each keyhole, twist the medallion to the right as far as it will go. If the medallion seems loose, twist off the medallion and adjust each screw, then repeat procedure.

Tip: *If the medallion edge does not rest flush against the ceiling you may adjust the drive depth of the screws.*

8. Remove the foam guide prior to installing light fixture.

Important Information:

Your Focal Point ceiling medallion functions as a decorative element only, and is not designed to serve as a support for your fixture or fan.

Focal Point advises that you first check local electrical codes on the use of medallions before installing.

When installing your medallion over an existing fixture, it is necessary to disconnect and take the fixture down.

ALWAYS turn off the electricity at the fuse or circuit breaker box before proceeding with any installation.